

# LIGNE PRO - MODEL: ALGAR5

Linear Luminaires

WAC ARCHITECTURAL

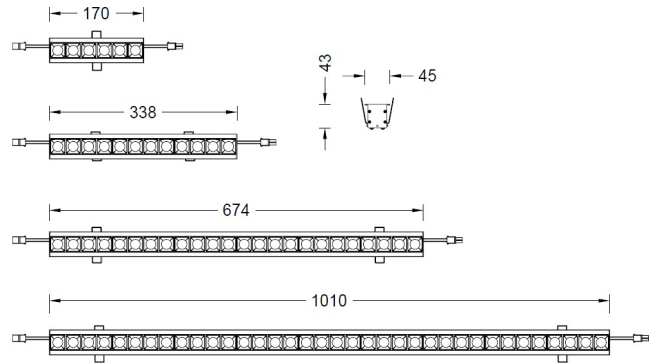
PROJECT:

TYPE:

## Product Image



## Line Drawing



## Product Description

Embedded Graze, using SUBROSA hidden light technology, with multiple light distribution, DC24V input, and can be connected head to tail. Suitable for concealed groove installation linear wall washing applications in hotels and commercial areas

## Product Features

- Body Material: Aluminum alloy extruded lamp body
- Optical System: Lens+SUBROSA hidden light system
- Finish: Static electricity powder coating
- Projection direction: /
- Accessories/Brackets: /
- Certification: CQC
- IP Rating: IP20
- Insulation Level: Class III
- Operating Temperature: -20°C~40°C

## Product Specifications

- LED Type: SMD
- Opening size: Slot width 37mm
- Ceiling Thickness: 1-25mm
- Shielding Angle: 35°
- Light power: 12W Max
- Source Lm: 1600lm@18W/m;2600lm@30W/m
- LED Lifetime: >50000h-L70 /B10-Ta25°C(LM-80/TM-21)
- CCT/CRI: 2700K, 3000K, 4000K, Ra90
- SDCM: 3 SDCM
- Input: 24V DC
- Dimming: User configured dimming module
- Net Weight: 2.6Kg without packing

## Order Model

Model	Sys Power	LED Num	Length	Driver	Reflector	CCT	Beam	Finish
<b>ALGAR5</b> Linear Graze	<b>18</b> 18W/m <b>30</b> 30W/m	<b>06</b> 6pcs	170mm	N No driver	B Black	<b>27</b> 2700K <b>30</b> 3000K <b>40</b> 4000K	E 22°x44°	<b>WT</b> White <b>BK</b> Black
		<b>12</b> 12pcs	338mm				1 16°	
		<b>24</b> 24pcs	674mm				2 22°	
		<b>36</b> 36pcs	1010mm				3 33° 4 44°	

Example: ALGAR5-3036N230BWT

# LIGNE PRO - MODEL: ALGAR5

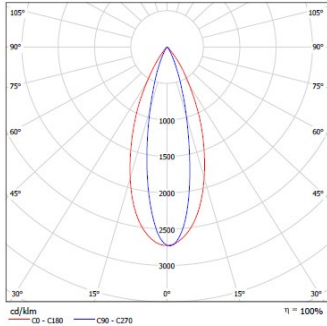
Linear Luminaires

WAC ARCHITECTURAL

PROJECT:

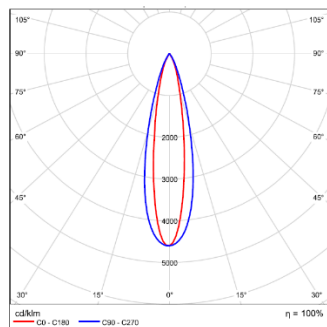
TYPE:

## LIGHT DISTRIBUTION@3000K LUMINAIRE DATA



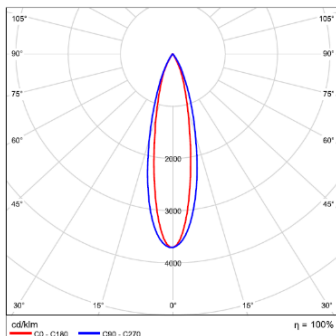
MODEL :	ALGAR5-1836NE30BBK
BEAM ANGLE :	22°X44°
POWER:	18 W/m
LUMENS:	1002 lm
CBCP:	2509 cd
EFFICACY:	56 lm/W

MODEL :	ALGAR5-3036NE30BBK
BEAM ANGLE :	22°X44°
POWER:	30 W/m
LUMENS:	1566 lm
CBCP:	3920 cd
EFFICACY:	52lm/W



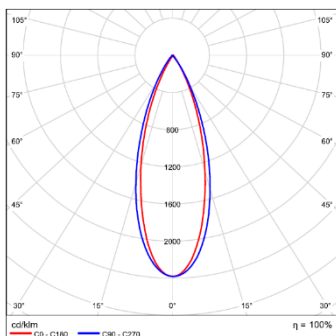
MODEL :	ALGAR5-1836N130BBK
BEAM ANGLE :	16°
POWER:	18 W/m
LUMENS:	1178 lm
CBCP:	5419 cd
EFFICACY:	65 lm/W

MODEL :	ALGAR5-3036N130BBK
BEAM ANGLE :	16°
POWER:	30 W/m
LUMENS:	1840 lm
CBCP:	8467 cd
EFFICACY:	61 lm/W



MODEL :	ALGAR5-1836N230BBK
BEAM ANGLE :	22°
POWER:	18 W/m
LUMENS:	1210 lm
CBCP:	4489 cd
EFFICACY:	67 lm/W

MODEL :	ALGAR5-3036N230BBK
BEAM ANGLE :	22°
POWER:	30 W/m
LUMENS:	1891 lm
CBCP:	7014 cd
EFFICACY:	63 lm/W



MODEL :	ALGAR5-1836N330BBK
BEAM ANGLE :	33°
POWER:	18 W/m
LUMENS:	1213 lm
CBCP:	4489 cd
EFFICACY:	67 lm/W

MODEL :	ALGAR5-3036N330BBK
BEAM ANGLE :	33°
POWER:	30 W/m
LUMENS:	1895 lm
CBCP:	7014 cd
EFFICACY:	63 lm/W

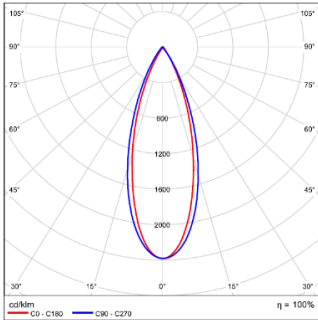
# LIGNE PRO - MODEL: ALGAR5

Linear Luminaires

WAC ARCHITECTURAL

PROJECT:

TYPE:



MODEL:	<u>ALGAR5-1836N430BBK</u>	<u>ALGAR5-3036N430BBK</u>
BEAM ANGLE :	<u>44°</u>	<u>44°</u>
POWER:	<u>18 W/m</u>	<u>30 W/m</u>
LUMENS:	<u>940 lm</u>	<u>1469 lm</u>
CBCP:	<u>1507 cd</u>	<u>2354 cd</u>
EFFICACY:	<u>52 lm/W</u>	<u>49 lm/W</u>