

Spot Luminaires

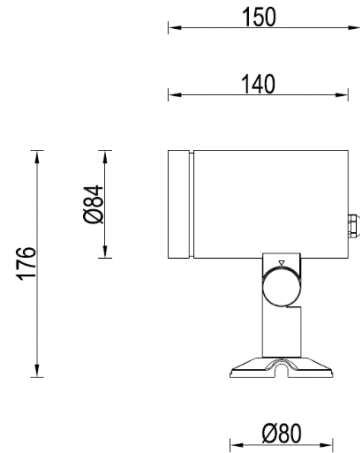
PROJECT:

TYPE:

Product Image



Line Drawing



Product Description

The Ring series floodlights are professional LED floodlights designed by WAC for high-end outdoor lighting venues. The lamp body has a compact size, utilizing effective heat dissipation to extend the lifespan of the LED. The concise appearance and high-performance optical performance highlight the environment more. The Ring series features multiple sizes and the latest LED technology, allowing for precise adjustment of steering in both vertical and horizontal directions. Can be applied to projection areas such as building facades, landscapes, sculptures, etc

Product Features

- Body Material: Aluminum alloy lamp body Optical System: Reflect
- Finish: Static electricity powder coating
- Adjustable Angle: Horizontal 0°~330°; Vertical -30°~90°
- Accessories: anti-glare hood
- Certification: CCC
- IP Rating: IP65
- Insulation Level: Class I
- Operating Temperature: -20°C~50°C

Product Specifications

- light source: COB
- Light source power: 18W Max
- Source Lm: 1718lm
- LED Lifetime: >50000h-L70 /B10-Ta25°C(LM-80/TM-21)
- CCT/CRI: 2700K/3000K/ 4000K , Ra90
- SDCM:3 SDCM
- Input: 220V/AC
- Dimming: ON-OFF / DMX512
- Net Weight: 1.0Kg without packing

Ordering model

Model	Power	LEDs (quantity)	Max Lumens (lm)	Control Systems	Beam	CCT	Finish
AEP9NI	18 18W(Max)	COB	1718	EL ON-OFF 220V AC Power Supply	1 15°	27 2700K	BK Black
				ML DMX512 220V AC Power Supply	2 29°	30 3000K	
					4 41°	40 4000K	

Example: AEP9NI-18EL130BK

WAC Lighting

www.waclighting.com (US)
www.waclighting.net (International)

Headquarters

44 Harbor Park Drive • Port Washington, NY
Phone (516) 515.5000 • Fax (516) 515.5050






WAC GROUP
TECHNOLOGY ILLUMINATED

Spot Luminaires

PROJECT:

TYPE:

Accessories

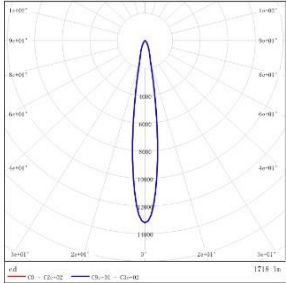
Item	Abbreviate	Pic	Mini
Wall Wash Visor	WW1		AEP9NI-WW1-BK
Wall Wash Visor	WW2		AEP9NI-WW2-BK
Stainless plate with Spike (Round base)	SPK		AEP1NL-SPK-BK
Support for Pole	SPL		AEP1SL-SPL-BK
Support for Tree	SPT		AEP9SI-SPT-BK

Spot Luminaires

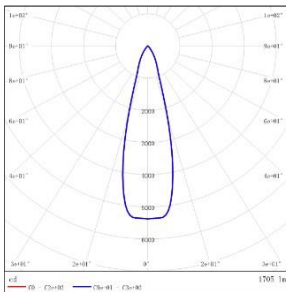
PROJECT:

TYPE:

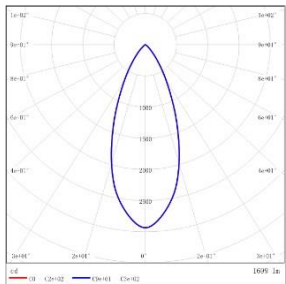
LIGHT DISTRIBUTION@3000K LUMINAIRE DATA



MODEL :	AEP9NI-18EL230BK
BEAM ANGLE:	15°
POWER:	20.5W
LUMENS:	1718 lm
CBCP:	13276 cd
EFFICACY:	84 lm /W



MODEL :	AEP9NI-18EL230BK
BEAM ANGLE:	29°
POWER:	20.4W
LUMENS:	1705 lm
CBCP:	5500 cd
EFFICACY:	83.4 lm /W



MODEL :	AEP9NI-18EL430BK
BEAM ANGLE:	41°
POWER:	20.4W
LUMENS:	1699 lm
CBCP:	2955 cd
EFFICACY:	83.2 lm /W

Spot Luminaires

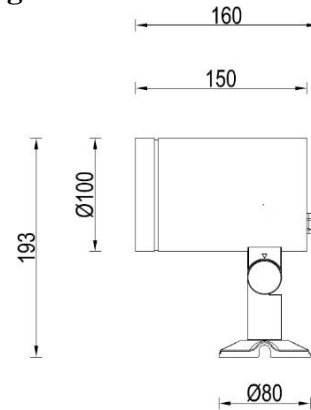
PROJECT:

TYPE:

Product Image



Line Drawing



Product Description

The Ring series floodlights are professional LED floodlights designed by WAC for high-end outdoor lighting venues. The lamp body has a compact size, utilizing effective heat dissipation to extend the lifespan of the LED. The concise appearance and high-performance optical performance highlight the environment more. The Ring series features multiple sizes and the latest LED technology, allowing for precise adjustment of steering in both vertical and horizontal directions. Can be applied to projection areas such as building facades, landscapes, sculptures, etc

Product Features

- Body Material: Aluminum alloy lamp body
- Optical System: Reflect
- Finish: Static electricity powder coating
- Adjustable Angle: Horizontal 0°~330°; Vertical -30°~90°
- Accessories: anti-glare hood
- Certification: CCC
- IP Rating: IP65
- Insulation Level: Class I
- Operating Temperature: -20°C~50°C

Product Specifications

- light source: COB
- Light source power: 32W Max
- Source Lm: 2968lm
- LED Lifetime: >50000h-L70 /B10-Ta25°C(LM-80/TM-21)
- CCT/CRI: 2700K/3000K/ 4000K , Ra90
- SDCM:3 SDCM
- Input: 220V/AC
- Dimming: ON-OFF / DMX512
- Net Weight: 1.5Kg without packing

Ordering model

Model	Power	LEDs (quantity)	Max Lumens (lm)	Control Systems	Beam	CCT	Finish
AEP9SI	32 32W(Max)	COB	2968	EL ON-OFF	1 18° 2 27° 3 39°	27 2700K 30 3000K 40 4000K	BK Black
				220V AC Power Supply			
				ML DMX512			
				220V AC Power Supply			

Example: AEP9SI-32EL130BK

WAC Lighting

www.waclighting.com (US)
www.waclighting.net (International)

Headquarters




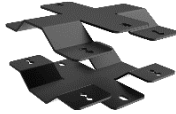

44 Harbor Park Drive • Port Washington, NY
Phone (516) 515.5000 • Fax (516) 515.5050

Spot Luminaires

PROJECT:

TYPE:

Accessories

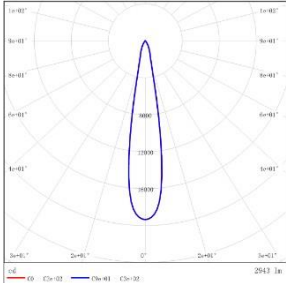
Item	Abbreviate	Pic	Mini
Wall Wash Visor	WW1		AEP9SI-WW1-BK
Wall Wash Visor	WW2		AEP9SI-WW2-BK
Stainless plate with Spike (Round base)	SPK		AEP1NL-SPK-BK
Support for Pole	SPL		AEP1SL-SPL-BK
Support for Tree	SPT		AEP9SI-SPT-BK

Spot Luminaires

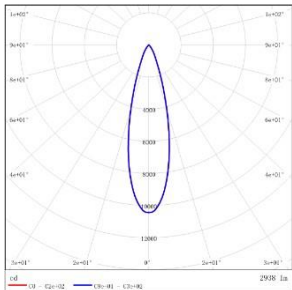
PROJECT:

TYPE:

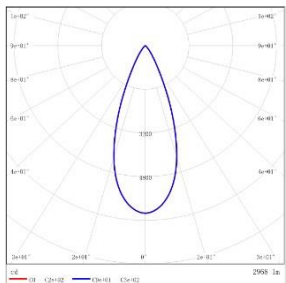
LIGHT DISTRIBUTION@3000K LUMINAIRE DATA



MODEL :	AEP9SI-32EL-130BK
BEAM ANGLE:	18°
POWER:	37.8W
LUMENS:	2943 lm
CBCP:	19372 cd
EFFICACY:	77.9 lm /W



MODEL :	AEP9SI-32EL230BK
BEAM ANGLE:	27°
POWER:	37.6W
LUMENS:	2938 lm
CBCP:	10461 cd
EFFICACY:	78.1 lm /W



MODEL :	AEP9SI-32EL330BK
BEAM ANGLE:	39°
POWER:	37.9W
LUMENS:	2968 lm
CBCP:	6156 cd
EFFICACY:	78.2 lm /W

Spot Luminaires

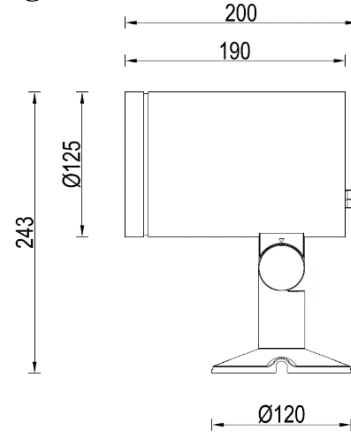
PROJECT:

TYPE:

Product Image



Line Drawing



Product Description

The Ring series floodlights are professional LED floodlights designed by WAC for high-end outdoor lighting venues. The lamp body has a compact size, utilizing effective heat dissipation to extend the lifespan of the LED. The concise appearance and high-performance optical performance highlight the environment more. The Ring series features multiple sizes and the latest LED technology, allowing for precise adjustment of steering in both vertical and horizontal directions. Can be applied to projection areas such as building facades, landscapes, sculptures, etc

Product Features

- Body Material: Aluminum alloy lamp body
- Optical System: Reflect
- Finish: Static electricity powder coating
- Adjustable Angle: Horizontal 0°~330°; Vertical - 30°~90°
- Accessories: anti-glare hood
- Certification: CCC
- IP Rating: IP65
- Insulation Level: Class I
- Operating Temperature: -20°C~50°C

Product Specifications

- light source: COB
- Light source power: 47W Max
- Source Lm: 5205lm
- LED Lifetime: >50000h-L70 /B10-Ta25°C(LM-80/TM-21)
- CCT/CRI: 2700K/3000K/ 4000K , Ra90
- SDCM:3 SDCM
- Input: 220V/AC
- Dimming: ON-OFF / DMX512
- Net Weight: 2.5Kg without packing

Ordering model

Model	Power	LEDs (quantity)	Max Lumens (lm)	Control Systems	Beam	CCT	Finish
AEP9MI	47 47W(Max)	COB	5205	EL ON-OFF	2 23° 3 35° 4 41°	27 2700K	BK Black
				220V AC Power Supply		30 3000K	
				ML DMX512		40 4000K	
				220V AC Power Supply			

Example: AEP9MI-47EL230BK

WAC Lighting

www.waclighting.com (US)
www.waclighting.net (International)

Headquarters




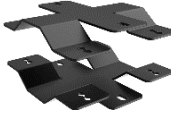

44 Harbor Park Drive • Port Washington, NY
Phone (516) 515.5000 • Fax (516) 515.5050

Spot Luminaires

PROJECT:

TYPE:

Accessories

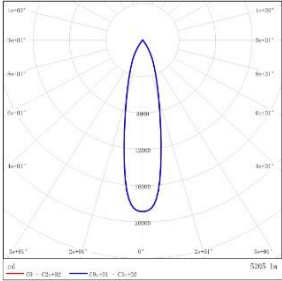
Item	Abbreviate	Pic	Mini
Wall Wash Visor	WW1		AEP9MI-WW1-BK
Wall Wash Visor	WW2		AEP9MI-WW2-BK
Stainless plate with Spike (Round base)	SPK		AEP1SL-SPK-BK
Support for Pole	SPL		AEP1LL-SPL-BK
Support for Tree	SPT		AEP9LI-SPT-BK

Spot Luminaires

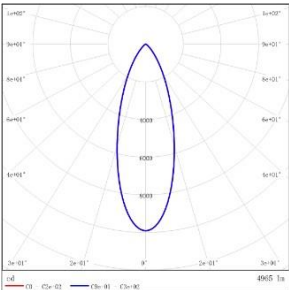
PROJECT:

TYPE:

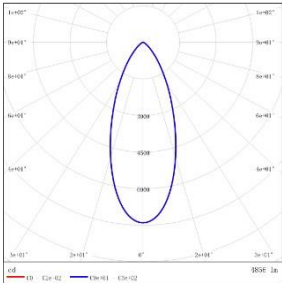
LIGHT DISTRIBUTION@3000K DATA



MODEL :	AEP9MI-47EL230BK
BEAM ANGLE :	23°
POWER :	52.9W
LUMENS :	5205 lm
CBCP :	18886 cd
EFFICACY :	98.4 lm /W



MODEL :	AEP9MI-47EL330BK
BEAM ANGLE :	35°
POWER :	53.4W
LUMENS :	4965 lm
CBCP :	9908 cd
EFFICACY :	93.0 lm /W



MODEL :	AEP9MI-47EL430BK
BEAM ANGLE :	41°
POWER :	53.0W
LUMENS :	4856 lm
CBCP :	7404 cd
EFFICACY :	91.6 lm /W

Spot Luminaires

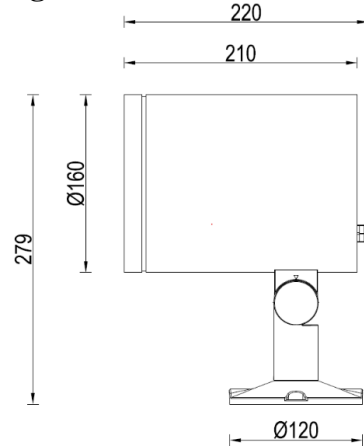
PROJECT:

TYPE:

Product Image



Line Drawing



Product Description

The Ring series floodlights are professional LED floodlights designed by WAC for high-end outdoor lighting venues. The lamp body has a compact size, utilizing effective heat dissipation to extend the lifespan of the LED. The concise appearance and high-performance optical performance highlight the environment more. The Ring series features multiple sizes and the latest LED technology, allowing for precise adjustment of steering in both vertical and horizontal directions. Can be applied to projection areas such as building facades, landscapes, sculptures, etc

Product Features

- Body Material: Aluminum alloy lamp
- body Optical System: Reflect
- Finish: Static electricity powder coating
 - Adjustable Angle: Horizontal 0°~330°; Vertical - 30°~90°
- Accessories: anti-glare hood
- Certification: CCC
- IP Rating: IP65
- Insulation Level: Class I
- Operating Temperature: -20°C~50°C

Product Specifications

- light source: COB
- Light source power: 68W Max
- Source Lm: 7220lm
- LED Lifetime: >50000h-L70 /B10-Ta25°C(LM-80/TM-21)
- CCT/CRI: 2700K/3000K/ 4000K , Ra90
- SDCM:3 SDCM
- Input: 220V/AC
- Dimming: ON-OFF / DMX512
- Net Weight: 3.5Kg without packing

Ordering model

Model	Power	LEDs (quantity)	Max Lumens (lm)	Control Systems	Beam	CCT	Finish
AEP9LI	68 68W(Max)	COB	7220	EL ON-OFF	2 23° 3 35° 4 41°	27 2700K	BK Black
				220V AC Power Supply		30 3000K	
				ML DMX512		40 4000K	
				220V AC Power Supply			






Example: AEP9LI-68EL330BK

Spot Luminaires

PROJECT:

TYPE:

Accessories

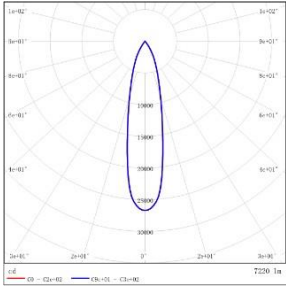
Item	Abbreviate	Pic	Mini
Wall Wash Visor	WW1		AEP9LI-WW1-BK
Wall Wash Visor	WW2		AEP9LI-WW2-BK
Stainless plate with Spike (Round base)	SPK		AEP1SL-SPK-BK
Support for Pole	SPL		AEP1LL-SPL-BK
Support for Tree	SPT		AEP9LI-SPT-BK

Spot Luminaires

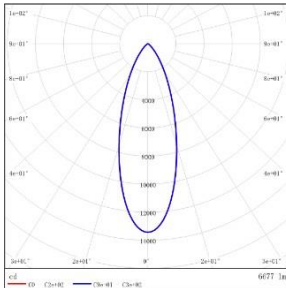
PROJECT:

TYPE:

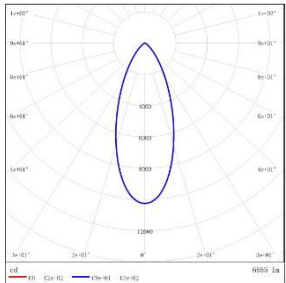
LIGHT DISTRIBUTION@3000K LUMINAIRE DATA



MODEL :	AEP9LI-68EL230BK
BEAM ANGLE:	23°
POWER:	78.0W
LUMENS:	7220 lm
CBCP:	26770 cd
EFFICACY:	92.6 lm /W



MODEL :	AEP9LI-68EL330BK
BEAM ANGLE:	35°
POWER:	77.6W
LUMENS:	6677 lm
CBCP:	13447 cd
EFFICACY:	86.0 lm /W



MODEL :	AEP9LI-68EL430BK
BEAM ANGLE:	41°
POWER:	77.4W
LUMENS:	6655 lm
CBCP:	10266 cd
EFFICACY:	85.9 lm /W