

## Zoron

### Square - 4" Wall Mount

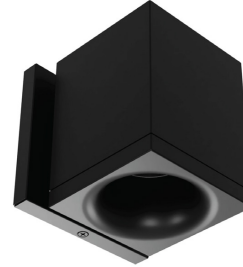
W4S | W4S-P

Fixture Type: \_\_\_\_\_

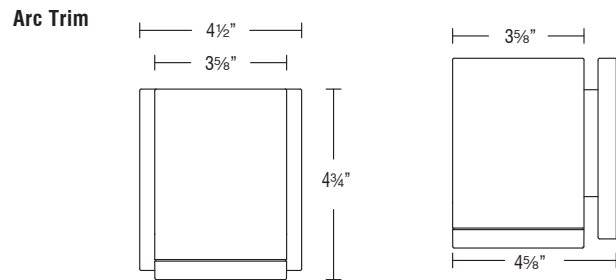
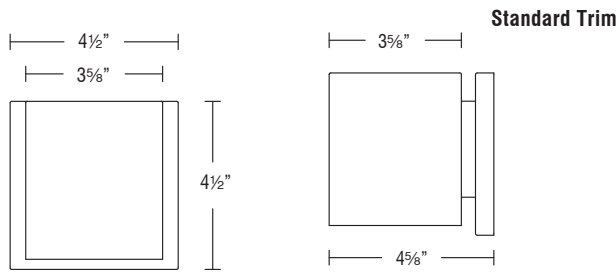
Project: \_\_\_\_\_

Catalog#: \_\_\_\_\_

Location: \_\_\_\_\_



#### LINE DRAWING



#### PRODUCT DESCRIPTION

The Zoron series combines sleek aesthetics with exceptional performance. Compact and stylish enough for residential applications, yet powerful enough to be used commercially. With built-in color temperature selection and the option to be used either indoors or out, Zoron adapts to any setting. Regressed trims and specialized TIR optics provide both aesthetic appeal and glare control, making Zoron the perfect blend of form and function.

#### SPECIFICATIONS

<b>Construction:</b>	Durable die-cast aluminum construction
<b>Mounting:</b>	Ceiling mounted
<b>Light Source:</b>	High output 3-step Mac Adam Ellipse COB Rated life of 50,000 hours at L70
<b>Input:</b>	Universal 120-277V AC 50/60 Hz
<b>Power:</b>	15W
<b>Dimming:</b>	ELV, 0-10V, TRIAC : 100 - 5%
<b>Maximum Delivered Intensity:</b>	Up to 3585 cd (Arc Trim, Narrow Flood 25°, 5000K)
<b>Maximum Delivered Output:</b>	Up to 1325 lm (Standard, Flood 45°, 5000K)
<b>Operating Temperature:</b>	-13°F to 122°F (-25°C to 50°C)
<b>Standards:</b>	IP65 rated, ETL & cETL Wet location listed Title 24 JA8 Compliant
<b>Warranty:</b>	5 year WAC Lighting guaranteed warranty

#### FINISHES



Model	Beam	Color Temp	CRI	Lumens Ref Output*	CBCP	Efficacy (lm/W)
W4S Standard Trim	N 25°	2700K	90	1015	2985	68
		3000K		1060	3310	71
		3500K		1100	3235	73
	F 45°	4000K	90	1130	3330	75
		5000K		1185	3485	79
		2700K		1135	1945	76
W4S Arc Trim	N 25°	3000K	90	1180	2025	79
		3500K		1230	2105	82
		4000K		1265	2165	84
	F 45°	5000K	90	1325	2265	88
		2700K		910	3075	61
		3000K		945	3200	63
W4S Arc Trim	N 25°	3500K	90	985	3330	66
		4000K		1010	3425	67
		5000K		1060	3585	71
	F 45°	2700K	90	1065	1950	71
		3000K		1110	2035	74
		3500K		1150	2115	77
F 45°	4000K	90	1185	2175	79	
	5000K		1240	2275	83	

#### BEAM ANGLES



Zoron

Square - 4" Wall Mount

W4S | W4S-P

Fixture Type: \_\_\_\_\_

Project: \_\_\_\_\_

Catalog#: \_\_\_\_\_

Location: \_\_\_\_\_

**ORDERING INFORMATION**

CONFIGURATION TABLE				
Model & Power	Beam	Color Temperature & CRI	Housing Finish	Trim Finish
<b>W4S</b>	<b>N - 25°</b> <b>F - 45°</b>	<b>CS - 5 CCT SWITCH</b>	<b>BK - BLACK</b> <b>WT - WHITE</b> <b>PBK - ARC BLACK</b> <b>PWT - ARC WHITE</b>	<b>CH - CHROME</b> <b>GL - GOLD</b> <b>HZ - HAZE</b> <b>WT - WHITE</b>

**W4S - CS - \_\_\_\_\_**

Example: W4S-NCS-WTHZ

W4S-NCS-PBK

**ORDERING NOTES**

- Arc Trim fixtures can only be ordered with the finishes Arc Black (PBK) and Arc White (PWT). These finishes cannot be ordered with a trim finish.

# Zoron

## Square - 4" Wall Mount

W4S | W4S-P

Fixture Type: \_\_\_\_\_

Project: \_\_\_\_\_

Catalog#: \_\_\_\_\_

Location: \_\_\_\_\_

### FEATURES

<p><b>Optics:</b></p> <ul style="list-style-type: none"> <li>• High lumen output at five different CCT/CRI combinations that are controlled with a 5 CCT switch</li> <li>• Low glare regressed trim with a 25° shielding angle</li> </ul>	<p><b>Construction:</b></p> <ul style="list-style-type: none"> <li>• IP65 wet location listed</li> <li>• Driver concealed within fixture body</li> </ul>
<p><b>LED:</b></p> <ul style="list-style-type: none"> <li>• High output integrated LED with a 3-step Mac Adam ellipse</li> <li>• Rated operational life of 50,000 hours at L70 (LED maintains 70% of its initial delivered lumens when brand new for 50,000 hours of use.)</li> </ul>	<p><b>Trim and Reflector:</b></p> <ul style="list-style-type: none"> <li>• Available in 25° and 45° beam angles</li> </ul>
<p><b>Electrical:</b></p> <ul style="list-style-type: none"> <li>• Available in a 15W power level</li> </ul>	<p><b>Installation:</b></p> <ul style="list-style-type: none"> <li>• Mounting plate secures the fixture to the applicable junction box</li> <li>• Suitable for indoor and outdoor applications</li> </ul>
<p><b>Dimming:</b></p> <ul style="list-style-type: none"> <li>• Electronic Low Voltage (ELV), TRIAC, and 0-10V dimming are available</li> <li>• ELV, TRIAC, and 0-10V dimming are capable of a range of 100 - 5%</li> </ul>	<p><b>Warranty:</b></p> <ul style="list-style-type: none"> <li>• WAC Architectural limited warranty up to 5 years</li> <li>• Full warranty found at: <a href="http://wacighting.com/warranty">wacighting.com/warranty</a></li> </ul>
<p><b>Notes:</b></p> <ul style="list-style-type: none"> <li>• The White and Black finishes on the body are electrostatically powder coated</li> <li>• The trim finishes of Black, Chrome, Gold, Haze, and White are all injection molded polycarbonate.</li> </ul>	

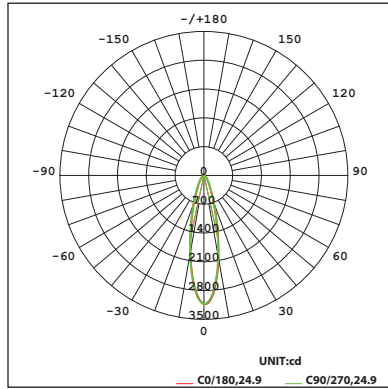
**PERFORMANCE DATA**

**Polar Candela Distribution Charts**

Samples shown with a 15W fixture set to 3000K and 90 CRI.

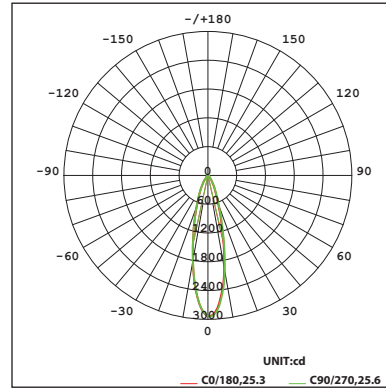
**Standard Trim**

**Narrow Flood Beam: 25° Beam**

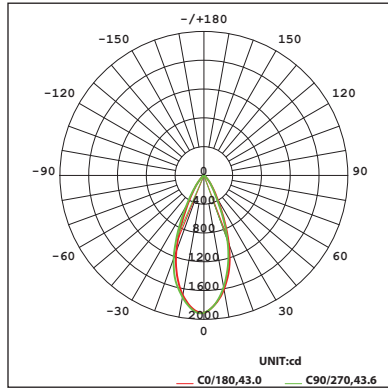


**Arc Trim**

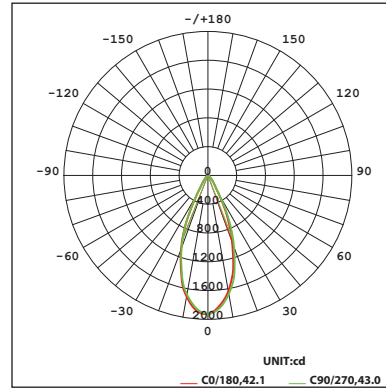
**Narrow Flood Beam: 25° Beam**



**Flood Beam: 45° Beam**



**Flood Beam: 45° Beam**



## Zoron

### Square - 4" Wall Mount

W4S | W4S-P

Fixture Type: \_\_\_\_\_

Project: \_\_\_\_\_

Catalog#: \_\_\_\_\_

Location: \_\_\_\_\_

## PERFORMANCE DATA

### Unified Glare Rating (UGR) Table

UGR values shown are calculated for a Standard Trim Narrow Flood Beam (25°) optic at 3000K and 90 CRI.  
General performance of other beam angles shown below.

ceiling/cavity	0.7	0.7	0.5	0.5	0.3	0.7	0.7	0.5	0.5	0.3
walls	0.5	0.3	0.5	0.3	0.3	0.5	0.3	0.5	0.3	0.3
working plane	0.2	0.2	0.2	0.2	0.2	0.2	0.2	0.2	0.2	0.2
Room dimensions	Viewed crosswise					Viewed endwise				
<b>x = 2H y = 2H</b>	16.1	16.9	16.3	17.1	17.3	16.1	17.0	16.3	17.1	17.3
3H	16.0	16.8	16.3	17.0	17.2	16.1	16.9	16.3	17.0	17.2
4H	16.0	16.7	16.3	17.0	17.2	16.0	16.8	16.3	17.0	17.2
6H	15.9	16.6	16.2	16.9	17.1	15.9	16.7	16.2	16.9	17.1
8H	15.9	16.6	16.2	16.8	17.1	15.9	16.6	16.2	16.8	17.1
12H	15.8	16.5	16.2	16.8	17.1	15.9	16.5	16.2	16.8	17.1
<b>4H</b>	16.1	16.8	16.3	17.0	17.3	16.1	16.8	16.4	17.1	17.3
3H	16.0	16.7	16.4	17.0	17.2	16.1	16.7	16.4	17.0	17.3
4H	16.0	16.6	16.4	16.9	17.2	16.0	16.6	16.4	16.9	17.2
6H	16.0	16.5	16.3	16.8	17.2	16.0	16.5	16.3	16.8	17.2
8H	15.9	16.4	16.3	16.8	17.1	15.9	16.4	16.3	16.8	17.1
12H	15.9	16.3	16.3	16.7	17.1	15.9	16.4	16.3	16.7	17.1
<b>8H</b>	15.9	16.4	16.3	16.7	17.1	15.9	16.4	16.3	16.8	17.1
6H	15.9	16.3	16.3	16.7	17.1	15.9	16.3	16.3	16.7	17.1
8H	15.8	16.2	16.3	16.6	17.0	15.8	16.2	16.3	16.6	17.1
12H	15.8	16.1	16.3	16.6	17.0	15.8	16.1	16.3	16.6	17.0
<b>12H</b>	15.8	16.3	16.3	16.7	17.1	15.9	16.3	16.3	16.7	17.1
6H	15.8	16.2	16.3	16.6	17.0	15.8	16.2	16.3	16.6	17.0
8H	15.8	16.1	16.3	16.5	17.0	15.8	16.1	16.3	16.5	17.0

Beam - Standard	Angle	UGR Range
Narrow Flood	25°	≤17
Flood	45°	≤16

Beam - Arc Trim	Angle	UGR Range
Narrow Flood	25°	≤21
Flood	45°	≤20