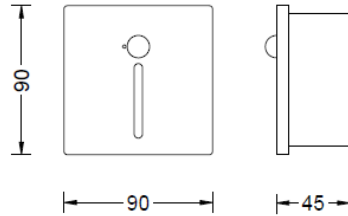


**Model Number:**

This installation manual applies to step lights: AWLD35 / AWLE35 / AWLF35.

AWLD35-LD02GW30BWT is used as the reference model, with dimensions as follows (unit: mm):

**Installation Precautions:**

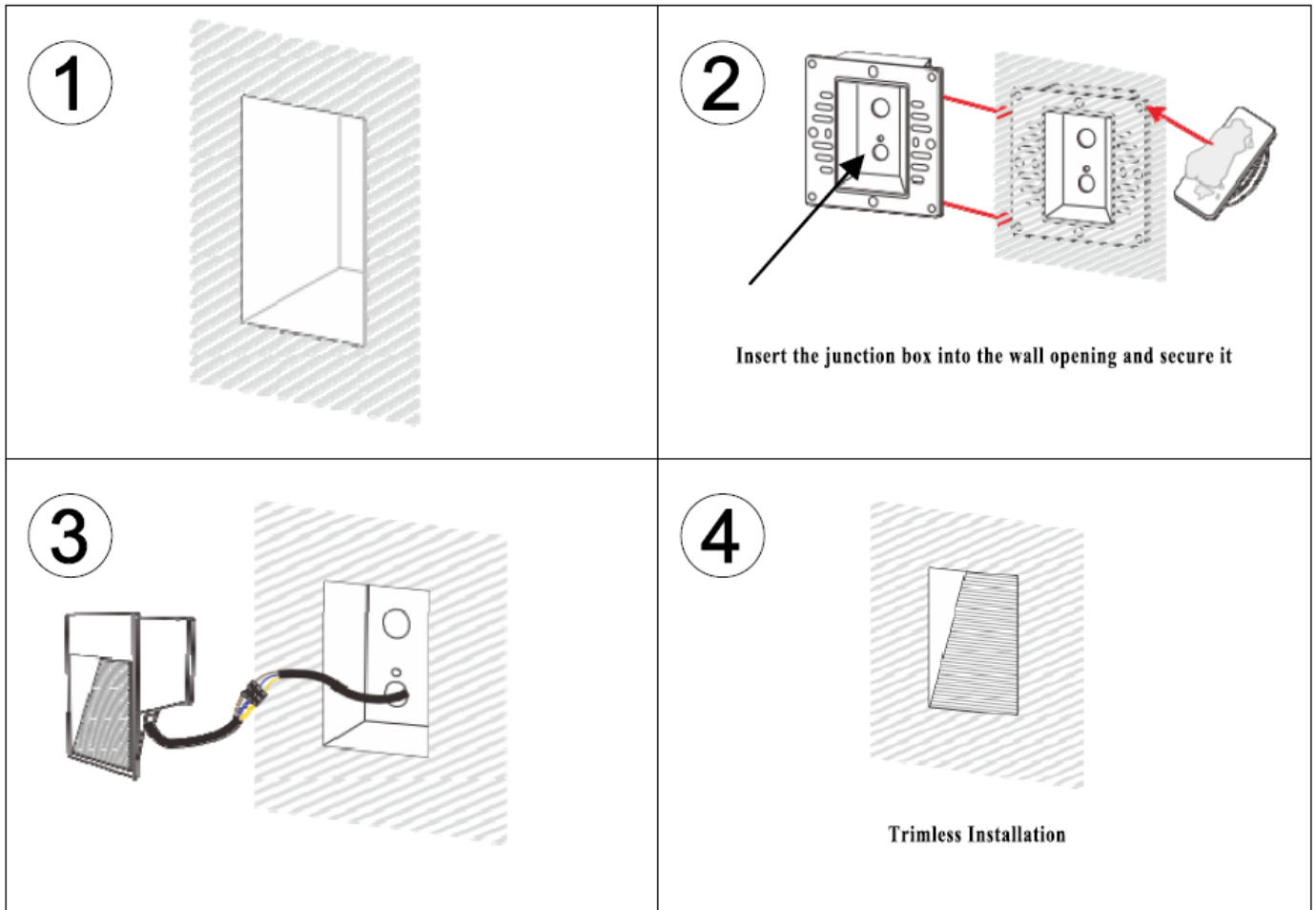
1. Please read all instructions and installation precautions carefully.
2. Installation must be performed by a qualified electrician in compliance with national and local regulations.
3. To avoid fire and electric shock hazards, ensure the power supply is disconnected before installation or maintenance.
4. Retain this manual for future reference.
5. Malfunctions caused by improper installation not following the manual are not covered by the warranty.
6. Power input: 220V AC, 50/60Hz.

**Light Installation:**

**(This product supports two installation methods, as follows:)**

**Flush Mounting (Trimless Installation):**

1. Pre-cut an opening of 80×80×50 mm and reserve a 220V AC power cable. See Figure 1 for details.  
Note: Confirm the input cable is routed through before securing the pre-embedded panel.
2. Insert the junction box into the wall opening and secure it in place.  
Note: AWLD35 / AWLE35 / AWLF35 support flush mounting. A trimless finish requires plastering the surface. Insert and secure the junction box in the wall opening. Remove the inner luminaire body before plastering work and reserve the 220V AC power cable. See Figure 2 for details.
3. Wiring: Connect the brown wire (L) to live, blue wire (N) to neutral, and yellow-green wire (PE) to ground. Secure connections with electrical tape or wire nuts (supplied by user). See Figure 3 for details.
4. Install the front cover. See Figure 4 for installation rendering.  
After power-on, the step light enters photocell + motion sensor mode. When ambient light falls below a set threshold, the light automatically turns on upon detecting human movement. It automatically turns off 30 seconds after no further motion is detected.  
Note: For optimal sensing performance, install the product vertically with the light-emitting side facing down and unobstructed.



**86-box Mounting:**

1. The junction box opening size is 86×86 mm; the junction box is sold separately. Embed a standard 86 box into the wall. See Figure 1 for details.  
 Note: Ensure the input cable is routed into the 86 box before securing the pre-mounted panel.
2. Fasten the luminaire's pre-mounted panel to the 86 box with screws. Wiring: Connect brown wire (L) to live, blue wire (N) to neutral, yellow-green wire (PE) to ground. Secure connections with electrical tape or wire nuts (user-supplied). See Figure 2 for details.
3. Align the cutout on the cover with the notch on the luminaire body, then gently snap the cover into place. Magnets on the cover and body will attract each other to secure the cover. See Figure 3 for details.
4. Install the cover. See Figure 4 for installation effect.  
 After power on, the step light operates in photocell + motion sensor mode. When ambient light is below a preset level, the light turns on automatically upon detecting human movement, and turns off 30 seconds after motion ceases.  
 Note: For optimal sensing performance, install vertically with the light emitting side facing down and unobstructed. Sensing performance is affected by ambient temperature, body size, and movement speed.

