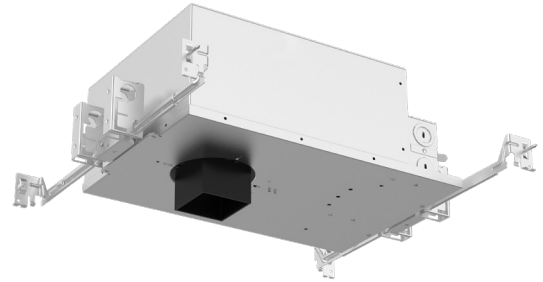
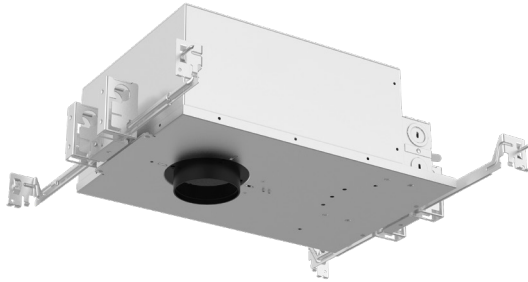


Fixture Type: _____
 Project: _____
 Catalog#: _____
 Location: _____



| LINE DRAWING | |
|---|---|
| R2FRNM-A A: 0.8" Collar Depth | R2FSNM-A A: 0.8" Collar Depth |
| R2FRNM-B B: 1.5" Collar Depth | R2FSNM-B B: 1.5" Collar Depth |
| | |

PRODUCT DESCRIPTION
 The FQ Recessed series offers a complete line of high performance LED luminaires that provide outstanding functionality and quality. The FQ series features superlative glare control with 30° shielding, 35° vertical tilting, and uniform floor-to-ceiling wall washing. Multiple power level options and a full line of round and square, trimmed and trimless luminaires offer versatile solutions for various lighting applications. Easy to order, install, and service.

| SPECIFICATIONS | |
|-------------------|---|
| Mounting: | New construction housings include universal mounting brackets and hanger bars Ceiling cut out (Round): $\varnothing 3\frac{1}{8}"$ Ceiling cut out (Square): $2\frac{9}{16}" \times 2\frac{9}{16}"$ Accommodates $\frac{1}{2}" - 1"$ ceiling thickness |
| Input: | Universal 120-277V AC, 50/60 Hz |
| Dimming: | ELV, TRIAC, 0-10V: 100 - 1% |
| Standards: | ETL & cETL, IC-rated, Airtight, SPCL (Spray Foam Compatible Luminaire), up to R6.8 per inch, as per UL 1598 |
| Warranty: | 5 year WAC Lighting guaranteed warranty |



Fixture Type: _____

Project: _____

Catalog#: _____

Location: _____

ORDERING INFORMATION

| HOUSINGS | | | | |
|-------------------------|--------|--------|-------|----------|
| | Model | Size | Power | Rating |
| New Construction Round | R2FRNM | A 0.8" | 1 15W | IC, SPCL |
| | | B 1.5" | 2 21W | IC |
| | | | 3 25W | Non-IC |
| New Construction Square | R2FSNM | A 0.8" | 1 15W | IC, SPCL |
| | | B 1.5" | 2 21W | IC |
| | | | 3 25W | Non-IC |

R2F _ _ - _ _

Example: R2FRNM-A-2

| Housing Model | Power | Replacement Driver Model |
|---------------|-------|--------------------------|
| R2FRNM | 1 15W | D-R2FN-1 |
| R2FSNM | 2 21W | D-R2FN-2 |
| | 3 25W | D-R2FN-3 |

Fixture Type: _____

Project: _____

Catalog#: _____

Location: _____

MILLWORK HOUSING APPLICATION TABLE

| Millwork Housing | Trim Model | Trim Description | Ceiling Thickness | | | | |
|------------------------|------------|------------------|-------------------|-------------|-------------|-------------|-------------|
| | | | 1/4" | 1/2" | 3/4" | 1" | 1 1/2" |
| R2FRNM-A Round | R2FRDL | Downlight | Yes | Yes | Yes | N.A. | |
| | R2FRPL | Pinhole | Yes | Yes | Yes | | |
| | R2FRAL | Adjustable | Yes, to 35° | Yes, to 35° | Yes, to 35° | | |
| | R2FRWL | Wall Wash | Yes | Yes | Yes | | |
| R2FRNM-B Round | R2FRDL | Downlight | N.A. | | Yes | Yes | Yes |
| | R2FRPL | Pinhole | | | Yes | Yes | Yes |
| | R2FRAL | Adjustable | | | Yes, to 12° | Yes, to 12° | Yes, to 12° |
| | R2FRWL | Wall Wash | | | Yes | Yes | Yes |
| R2FSNM-A Square | R2FSDL | Downlight | Yes | Yes | Yes | N.A. | |
| | R2FSPL | Pinhole | Yes | Yes | Yes | | |
| | R2FSAL | Adjustable | Yes, to 25° | Yes, to 25° | Yes, to 25° | | |
| | R2FSWL | Wall Wash | Yes | Yes | Yes | | |
| R2FSNM-B Square | R2FSDL | Downlight | N.A. | | Yes | Yes | Yes |
| | R2FSPL | Pinhole | | | Yes | Yes | Yes |
| | R2FSAL | Adjustable | | | Yes, to 8° | Yes, to 8° | Yes, to 8° |
| | R2FSWL | Wall Wash | | | Yes | Yes | Yes |